

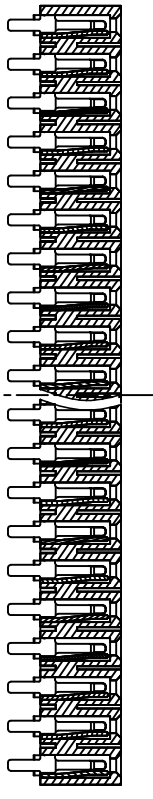
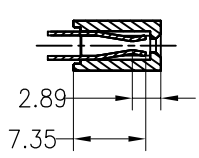
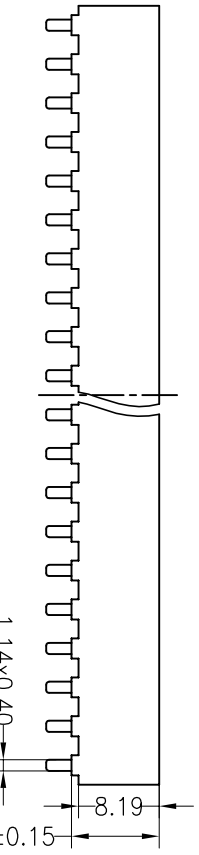
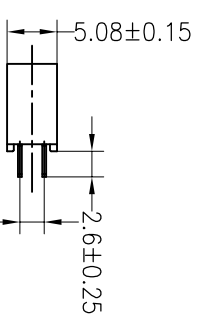
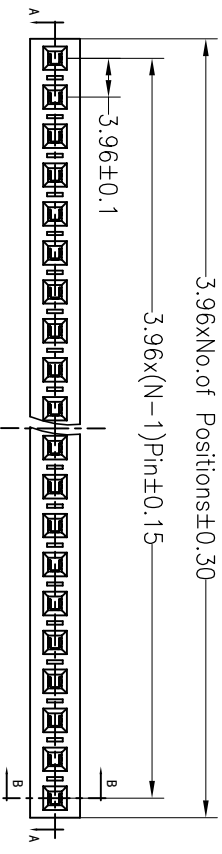
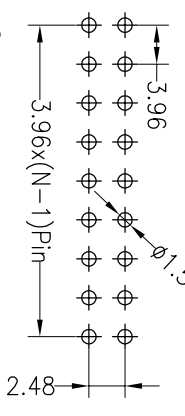
HSE ROHS

SPECIFICATIONS

Rated Current: 7.0AMP
 Contact Resistance: 20mΩ Max
 Withstand Voltage: 1000V AC/DC
 Insulation Resistance: 1000MΩ Min
 Operation Temperature: -40°C to +105°C

Contact Material: Brass
 Contact Plating: Sn Over Ni
 Insulator Material: Polyester (UL94V-0)
 Standard: LCP
 Max. Processing Temp: 230°C for 30-60 seconds
 (260°C for 10 seconds)

Recommended P.C.B Layout (Top Side)
 (PCB BOARD TOLERANCE ±0.05)



SEST.PIN:A-A

Ordering Information

2989 01 XX F N XX S UX01

- No. of Pins Per Row: 1*2~1*20
- Insulator Material Option: A=BK-PBT, B=BK-PA66, C=BK-PA6T, D=BK-PA46, E=BK-PA9T, F=BK-LCP
- Contact Plating: G0:Gold Flash, S0:Gold Flash/Tin, SN:Tin, SM:Matte-Tin
- Packaging: 0=PE Bag, A=Troy, T=tube

OPERATION		DRAW		SCALE		FIT		PART NO.	
DIM	TOL	Y.YuSheng	12.09.21	UNIT	mm	A4	1/1	298901XXFNXXSUX01	
X.X	±0.30								
X.XX	±0.20	CHECK							
X.XXX	±0.10								
Angle	±3°	APPROVE							
REV	DATE	MODIFICATION DESCRIPTION	CHANGE						
1	2012.09.21	NEW DRAWING							

JIN 深圳市锦凌电子有限公司
 SHENZHEN JINLING ELECTRONIC CO.,LTD
 Tel: 86-755-2997-5806/5802 Fax: 86-755-2997-5892

TITLE: 3.96PF H8.89mm 1xNpin 180°